



supertech
Yours for Life



CAPE TOWN



Sec 77



Sec 50

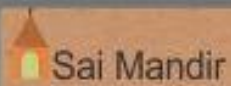
Sec 119

Sec 120

Sec 72

Amity

To Kalindi Kunj



NH-24

- 82% open landscaped area
- 4 side open vastu friendly plot
- 100 acre adjoining city greens
- In-house clubs with exclusive facilities
- 24 hour water & power supply
- Metro connectivity
- Extensive sports facilities like Swimming, Basketball, Volleyball, Badminton, Tennis etc.
- Health Club, Medical Centre, Ayurvedic Massage Centre
- Round the clock customer care
- Reticulated gas supply to every kitchen
- Shopping centre within the complex
- Ample parking space
- Jogging Track, Gymnasium, Herbal and Medicine Plantation



45 M WIDE ROAD

30 M WIDE ROAD

45 M WIDE ROAD

45 M WIDE ROAD



FLOOR PLAN

2BHK + 2 Toilets +
Kitchen + 3 Balconies



Type A super area: 930 sq. ft.



FLOOR PLAN

2BHK + 2 Toilets + Kitchen +
Dining + 3 Balconies



Type B super area: 1082 sq. ft.



FLOOR PLAN

2BHK + Study + 2 Toilets +
Kitchen + Dining + 5 Balconies



Type C super area: 1150 sq. ft.

FLOOR PLAN

3BHK + 2 Toilets + Kitchen
+ Dining + 3 Balconies

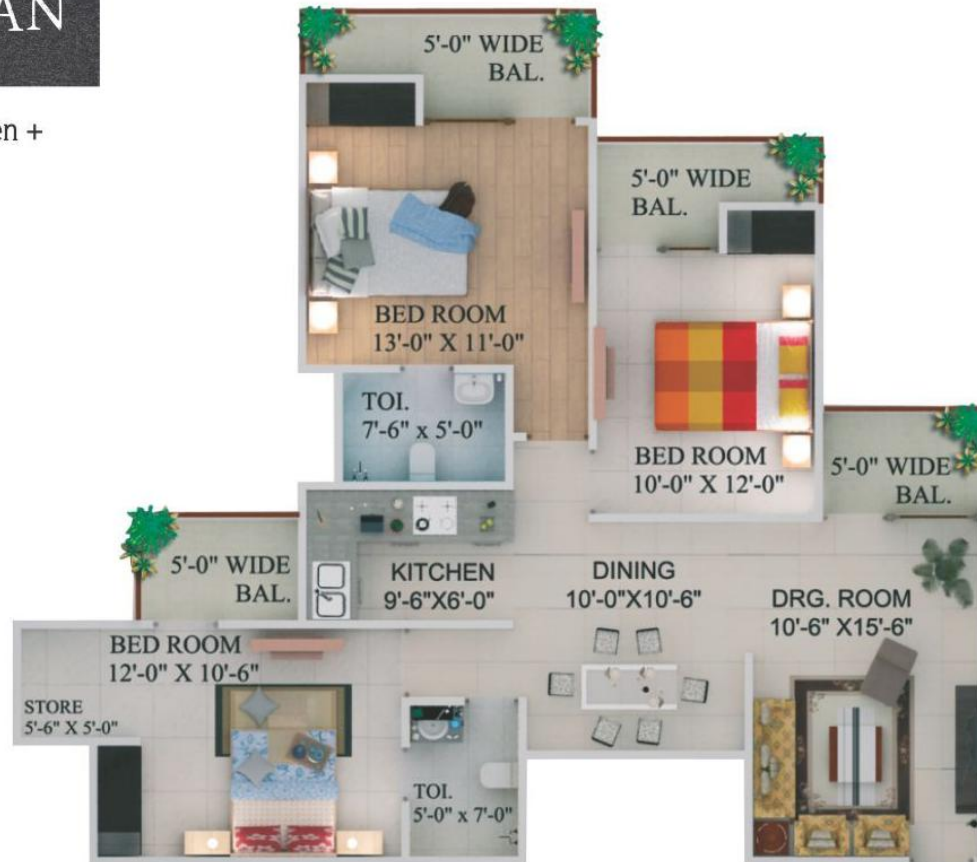


↑
ENTRY

Type A super area: 1295 sq. ft.

FLOOR PLAN

3BHK + 2 Toilets + Kitchen +
Dining + 4 Balconies

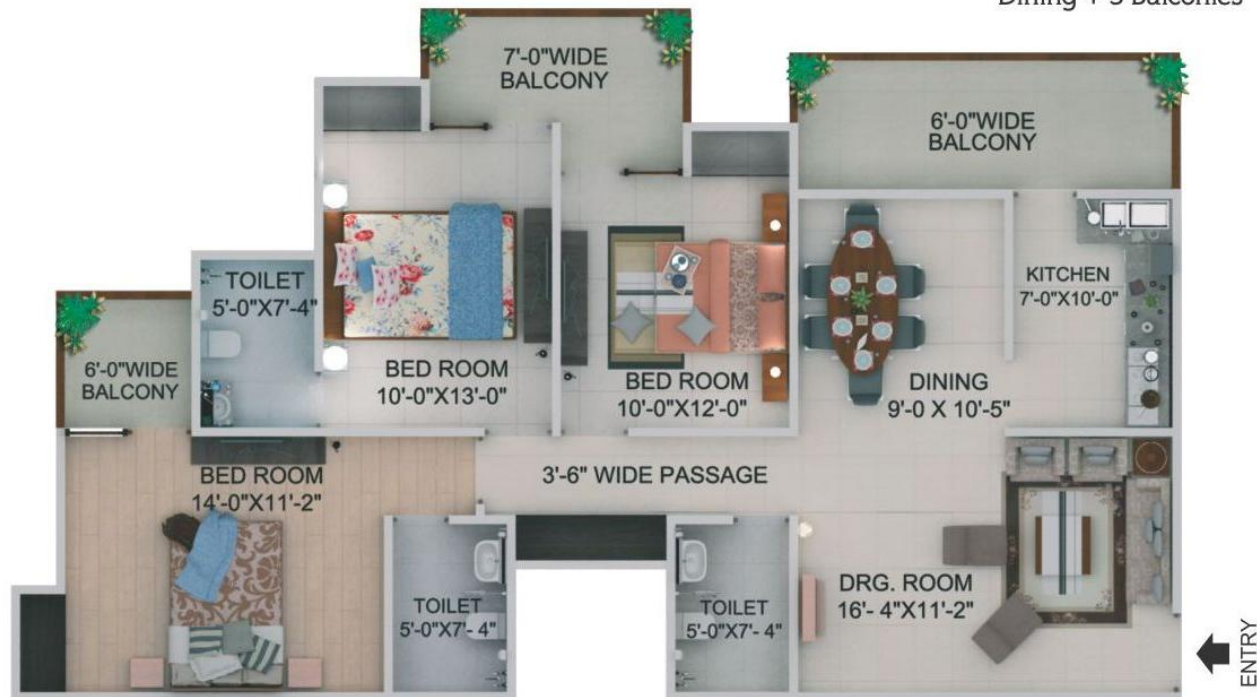


Type B super area: 1505 sq. ft.

↑
ENTRY

FLOOR PLAN

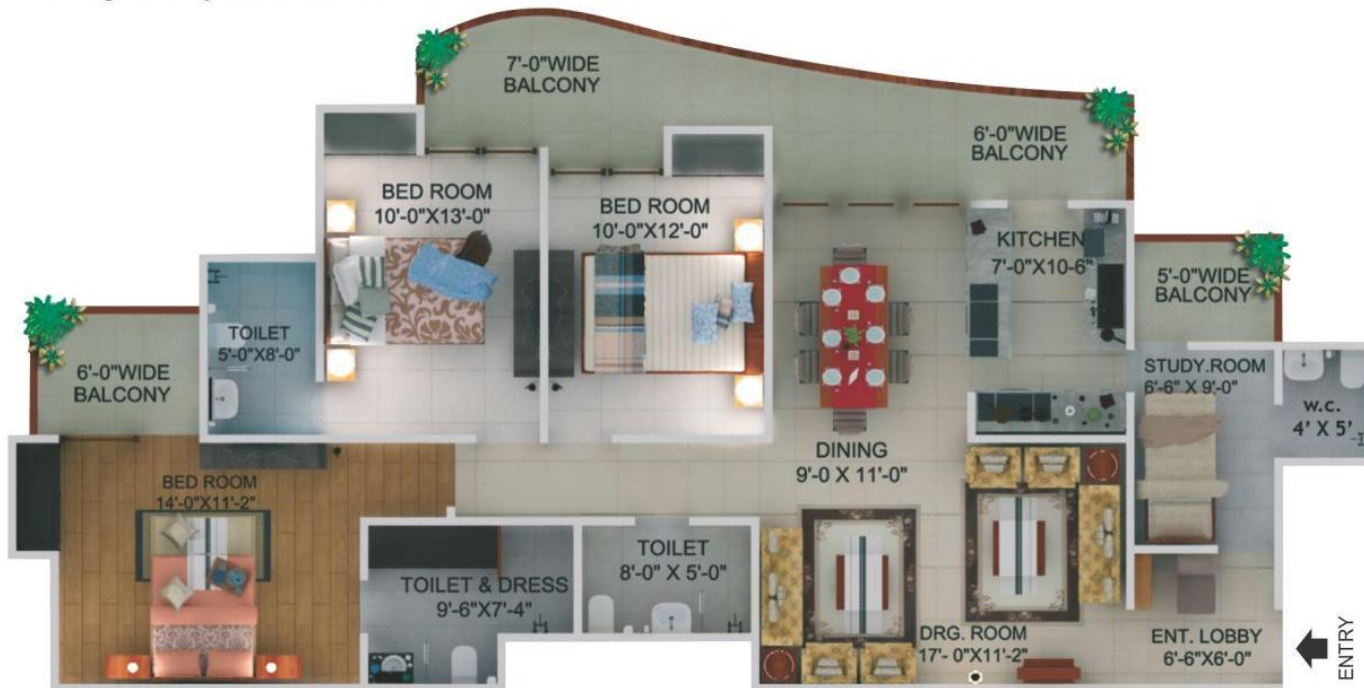
3BHK + 3 Toilets + Kitchen +
Dining + 3 Balconies



Type C super area: 1625 sq. ft.

FLOOR PLAN

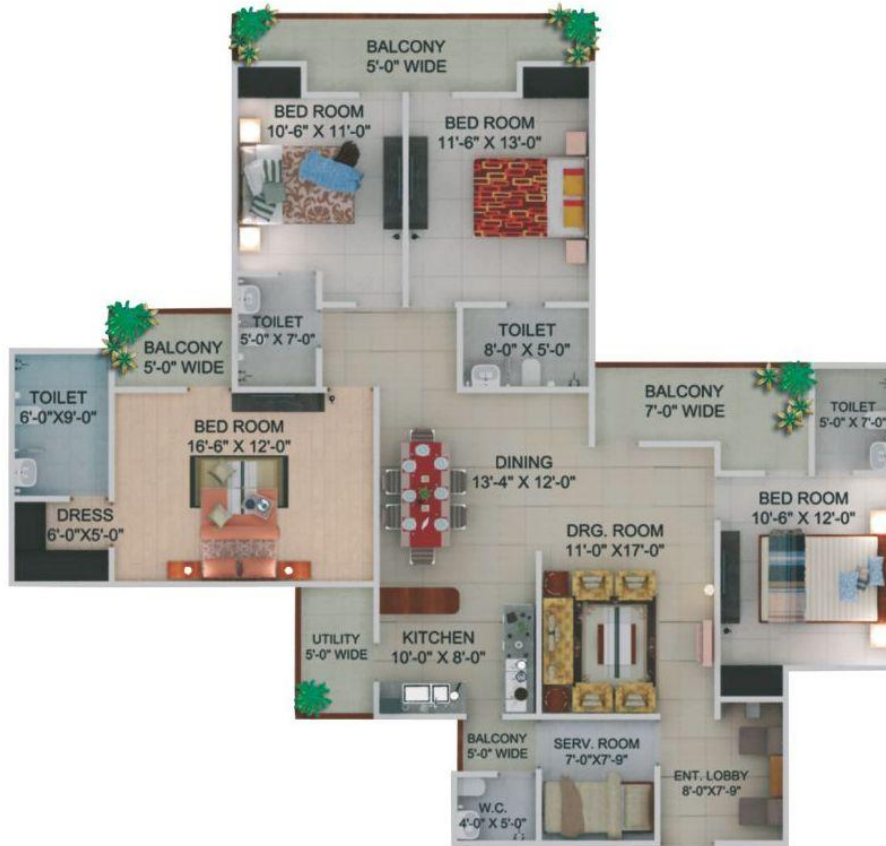
3BHK + 4 Toilets + Kitchen +
Dining + Study + 3 Balconies



super area: 1945 sq. ft.

FLOOR PLAN

4BHK + 4 Toilets + Kitchen + Dining
+ 4 Balconies + Servant Room



super area: 2385 sq. ft.



SPECIFICATIONS



Living Room

Floor - Vetrified Tiles
External Door and Window - Powder Coated Aluminum with Double Rebate
Electrical Fittings - Sheet and Switches
Walls - Oil Bound Distemper
Internal Door - Flush Shutter with Wooden Frame
Hardware - All Doors and windows with metal fittings along with mortice lock on the main door
Electrical - Copper wiring and PVC Concealed conduit, Provision for adequate light and power points as well as television and TV outlets with modular switches and protective M.C.B's.
Ceilings - Oil Bound Distemper



Dining

Floor - Vetrified Tiles
External Door and Window - Powder Coated Aluminum with Double Rebate
Electrical Fittings - Sheet and Switches
Walls - Oil Bound Distemper
Internal Door - Flush Shutter with Wooden Frame
Hardware - All Doors and windows with metal fittings along with mortice lock on the main door
Electrical - Copper wiring and PVC Concealed conduit, Provision for adequate light and power points as well as television and TV outlets with modular switches and protective M.C.B's.
Ceilings - Oil Bound Distemper



Bedroom

Floor - Vetrified Tiles
External Door and Window - Powder Coated Aluminum with Double Rebate
Electrical Fittings - Sheet and Switches
Walls - Oil Bound Distemper
Internal Door - Flush Shutter with Wooden Frame
Hardware - All Doors and windows with metal fittings along with mortice lock on the main door
Electrical - Copper wiring and PVC Concealed conduit, Provision for adequate light and power points as well as television and TV outlets with modular switches and protective M.C.B's.
Ceilings - Oil Bound Distemper



Master Bedroom

Floor - Wooden Flooring wardrobe/cupboard in all bedrooms
External Door and Window - Powder Coated Aluminum with Double Rebate
Electrical Fittings - Sheet and Switches
Walls - Oil Bound Distemper
Internal Door - Flush Shutter with Wooden Frame
Hardware - All Doors and windows with metal fittings along with mortice lock on the main door
Electrical - Copper wiring and PVC Concealed conduit, Provision for adequate light and power points as well as television and TV outlets with modular switches and protective M.C.B's.
Ceilings - Oil Bound Distemper



Dressing Room

Floor - Wooden Flooring wardrobe/cupboard in all bedrooms
External Door and Window - Powder Coated Aluminum with Double Rebate
Electrical Fittings - Sheet and Switches
Walls - Oil Bound Distemper
Internal Door - Flush Shutter with Wooden Frame
Hardware - All Doors and windows with metal fittings along with mortice lock on the main door
Electrical - Copper wiring and PVC Concealed conduit, Provision for adequate light and power points with modular switches and protective M.C.B's.
Ceilings - Oil Bound Distemper



Servant Room

Floor - Ceramic Tiles
External Door and Window - Powder Coated Aluminum with Double Rebate
Electrical Fittings - Sheet and Switches
Walls - Oil Bound Distemper
Internal Door - Flush Shutter with Wooden Frame

Disclaimer: Unit Layout, Master Layout & Specifications listed above are tentative and can be changed at the sole discretion of Builder/Developer.



Kitchen

Floor - Vetrified Tiles
External Door and Window - Powder Coated Aluminum with Double Rebate
Electrical Fittings - Sheet and Switches
Walls - Ceramic tiles of 2' height from the platform
Fittings - Stainless steel sink with C.P. Fittings full Modular Kitchen with RO system
Internal Door - Open
Hardware - All Doors and windows with metal fittings
Electrical - Copper wiring and PVC Concealed conduit, Provision for adequate light and power points with modular switches and protective M.C.B's.
Water Supply - Underground and Overhead water tanks with pumps and 24 hours water supply. Individual R.O plant Standard make in each kitchen.
Ceilings - Oil Bound Distemper



Toilet

Floor - Ceramic Tiles
Electrical Fittings - Sheet and Switches
Walls - Ceramic tiles of 7' height
Fittings - Washbasin WC & C.P. Fittings
Internal Door - Flush Shutter
Hardware - All Doors and windows with metal fittings
Electrical - Copper wiring and PVC Concealed conduit, Provision for adequate light and power points with modular switches and protective M.C.B's.
Water Supply - Underground and Overhead water tanks with pumps and 24 hours water supply.
Ceilings - Flase Ceiling



Balconies

Floor - Ceramic Tiles
Electrical Fittings - Sheet and Switches
Walls - Oil Bound Distemper
Electrical - Copper wiring and PVC Concealed conduit, Provision for adequate light and power points
Water Supply - Underground and Overhead water tanks with pumps and 24 hours water supply.
Ceilings - Permanent paint finish



Lift

Floor - P.V.C. Flooring
Electrical Fittings - Sheet and Switches



Lobbies/Corridor

Floor - Kota Stone/Vetrified Tiles
Walls - Oil Bound Distemper
Electrical - Copper wiring and PVC Concealed conduit



Exterior Finish

Walls - Texture Paint
Internal Door - Flush Shutter with Wooden Frame

NOTE: Tv/ Telephone Points will be provided in all Rooms & Toilet.

Disclaimer: Unit Layout, Master Layout & Specifications listed above are tentative and can be changed at the sole discretion of Builder/Developer.



supertech
Yours for Life



supertech
Yours for Life