



# Casa Greens 1

2 & 3 BHK LUXURY APARTMENTS • G. Noida (West)

Go *Green* Casa *Green*



It's a home one has always aspired for. CASA GREENS 1, situated in Greater Noida (West) epitomizes lifestyle that closest to being perfect. Boasting of superb connectivity and meticulous planning, CASA GREENS 1 has been designed to help you lead a life without care. In the company of greenery and humming birds no effort has been spared to offer you a home that's truly a splendor.



## HIGHLIGHTS

- Approx. 80% green area
- Modern Landscape Park
- Location on 60 mtr. road
- Adjoining 7 acres park
- Modern water bodies
- Just 2 Km. from NH-24\*
- 1Km from proposed Metro station\*
- 15 Min. drive from Sec-18, Noida
- Well ventilated apartments
- Almost all units are three side open
- Energy efficient flats
- Vastu complaint
- French window in every unit
- Multilevel security through CCTV surveillance
- 24 x 7 security
- 100% power backup
- Dedicated Parking (Available Automated Parking)
- Non Polluted Apartment
- Internal Garden with modern landscaping
- A complete residential apartment
- No commercial activity in front of the apartment
- Corner Plot

## FEATURES

- High-tech club with swimming pool
- Ultra modern club, Gym, Health club
- Sauna & Steam
- Yoga & Meditation atrium
- Tennis court, Badminton court, Squash
- Table tennis, Billiards, Pool table
- Children's play area
- Grocessory shop
- Kids play school
- Swimming pool
- Kids splash pool
- Baby Care Centre
- Spa
- Saloon
- Coffee Lounge
- Steam Iron & Laundry

# Masterpiece By Architect **Hafeez Contractor**

### CONSULTANTS

Principal Architect <b>Architect Hafeez Contractor</b>	Resident Architect <b>DAAT India Private Limited</b> Design Architecture and Associate Technologies
Structural Engineer <b>CE CON Engg.</b>	MEP Consultant <b>Sunil Nayyar Consultants Pvt. Ltd.</b>

## ■ SPECIFICATIONS ■

### **STRUCTURE**

- Earthquake Resistant, R.R.C Frame Structure as per ISI codes & IIT Approved.

### **FLOORING**

- Live / Dining - Vitrified Tiles
- Master Bed Room - Laminated Wooden Floor
- Bed Room - Vitrified Tiles
- Toilet - Anti Skid Tiles
- Kitchen - Vitrified Tiles
- Balcony - Anti Skid Tiles

### **WALL & CEILING FINISH**

- Internal Wall Finishes - Oil Bound Distemper
- External Wall Finishes - Texture Paint
- Toilet - Glazed Ceramic Tiles Upto 7'-0" height
- Kitchen - Ceramic Tiles 2'-0" Above Counter

### **COUNTER**

- Kitchen - Granite Stone
- Toilet - Granite Stone

### **DOOR AND WINDOWS**

- Door Frames - Seasoned Hardwood
- Door Shutters - Teak Finish Flush Doors
- Entrance Door - Teak Wood Paneled
- Windows - Powder coated Aluminum Frames & Shutters

### **FITTINGS & FIXTURES**

- White Sanitary Fixture with CP Fittings, Stainless Steel Kitchen Sink with drain Board.

### **ELECTRICAL FITTING**

- Electrical wiring with Copper conductors in concealed Conduits as per ISI code, Switches and Sockets of reputed makes.

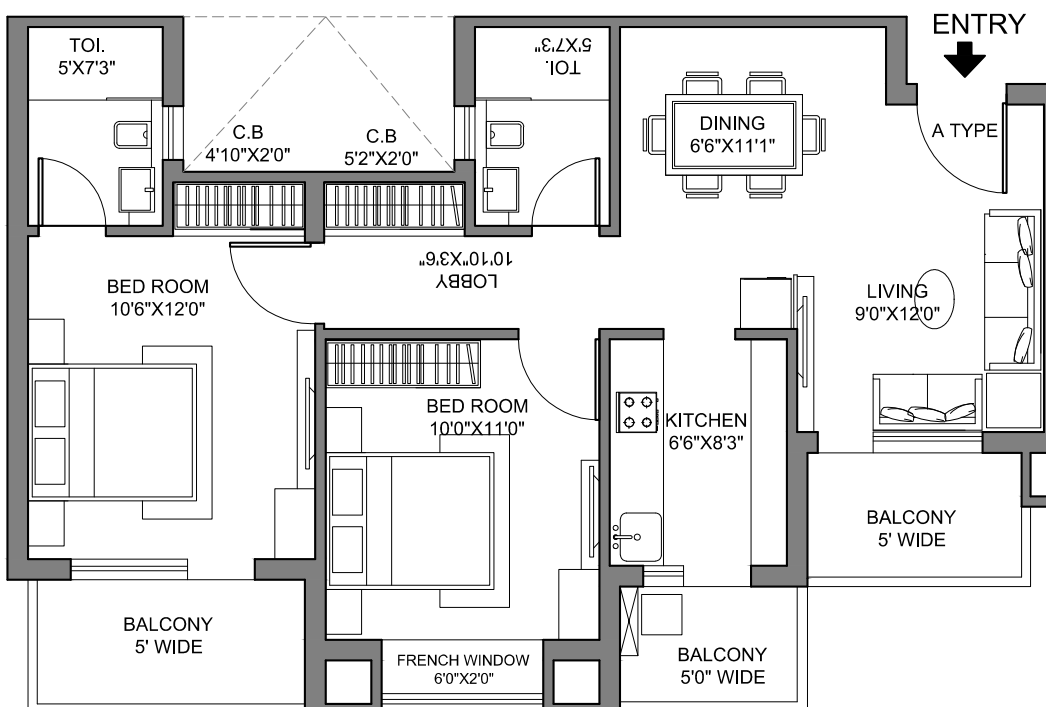
### **COMMON AREAS**

- Staircases - Kota Stone / Marble Flooring Washable Texture Paint in Internal Walls.
- Corridor - Vitrified Flooring.
- Washable Texture Paint in Internal Walls.
- Entrance Lobby - Marble / Granite / Vitrified Flooring.
- Stone Cladding in walls.
- Washable Texture Paint in Internal Walls.

■ UNIT PLAN ■

2BHK + 2 Toilet + 3 Balconies + French Window

**Super Builtup Area = 1050 Sq. Ft.**

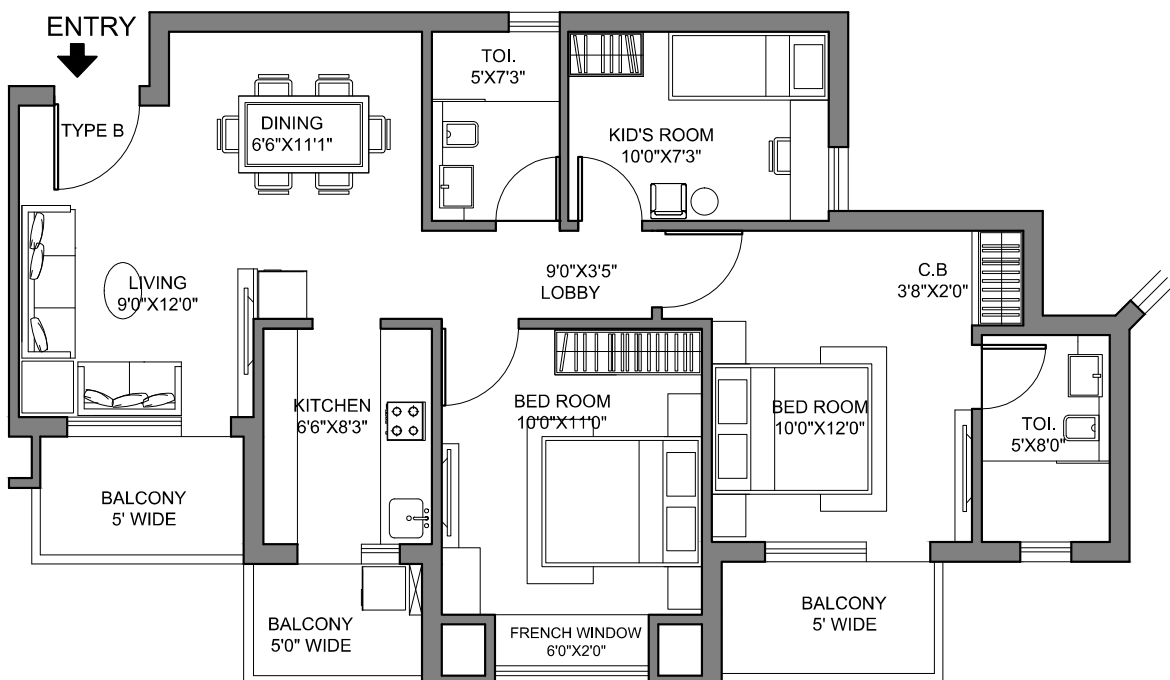




■ UNIT PLAN ■

3BHK + 2 Toilet + 3 Balconies + French Window

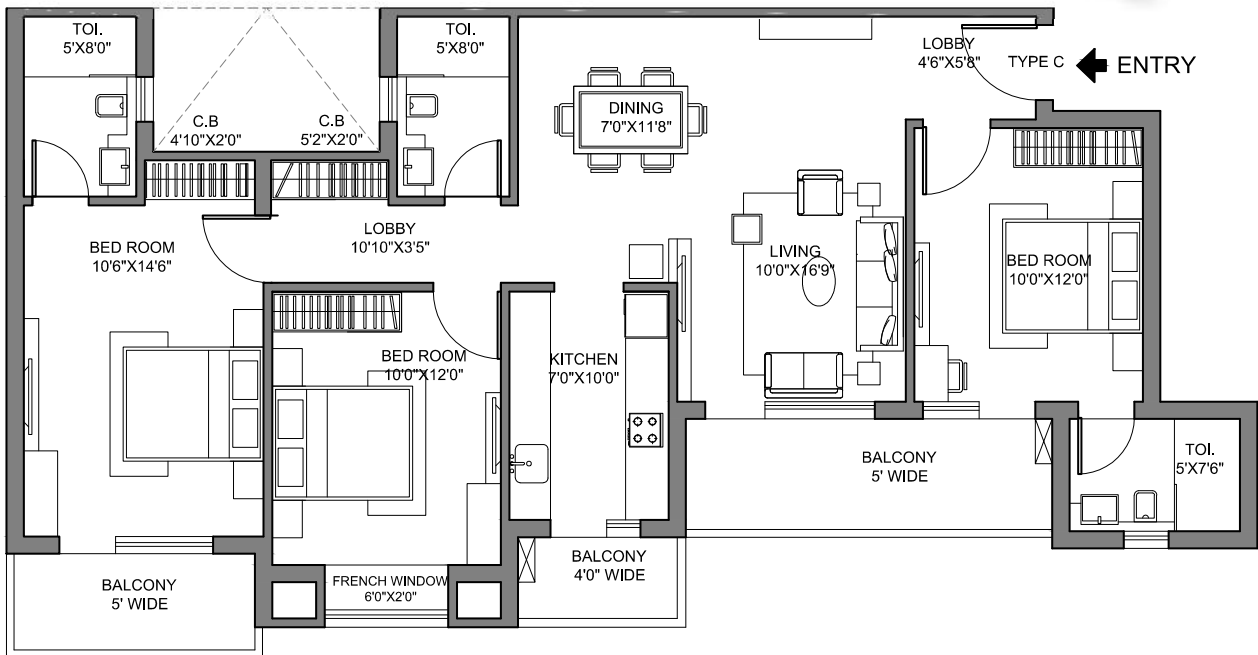
Super Builtup Area = 1140 Sq. Ft.



■ UNIT PLAN ■

3BHK + 3 Toilet + 3 Balconies + French Window

**Super Builtup Area = 1490 Sq. Ft.**





■ LAYOUT PLAN ■



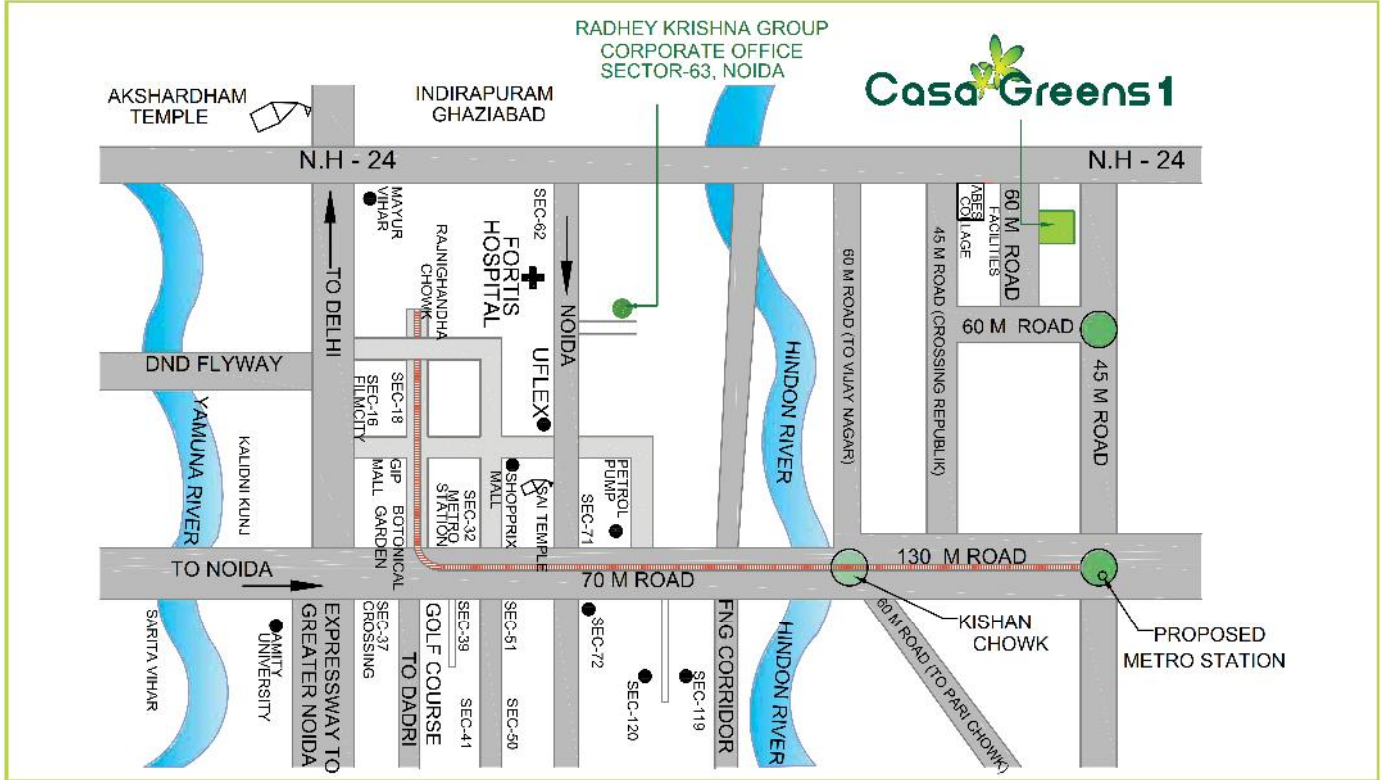
- |        |                   |                                    |                         |                 |
|--------|-------------------|------------------------------------|-------------------------|-----------------|
| LEGEND | 1. Main Entry     | 3A. Kids Pool                      | 6. Kids Play Area       | 9. Mound Garden |
|        | 2. Tower Drop Off | 4. Half Basketball/Badminton Court | 7. Interactive Fountain | 10. Party Lawn  |
|        | 3. Swimming Pool  | 5. Tree Court                      | 8. Tower Exit - Pergola |                 |

3BHK + 3T-1490 sq. ft.

3BHK + 2T-1140 sq. ft.

2BHK + 2T-1050 sq. ft.

■ LOCATION MAP ■

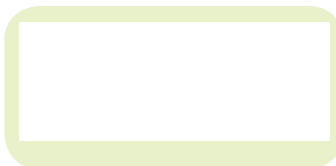


LUCKNOW PROJECTS

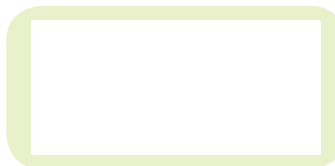
Possession started



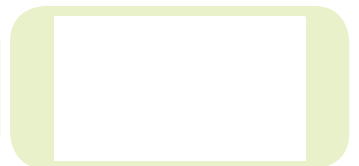
On Going



Up Coming



Up Coming



DELHI NCR PROJECTS

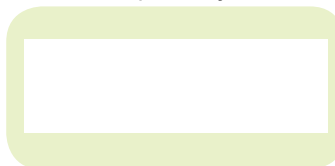
On Going



Up Coming



Up Coming



Up Coming



**Radhey Krishna Techno Build Pvt. Ltd.**

(An ISO 9001 : 2008 Certified Company)

**Corporate Office:** B - 49, Sector - 63, Noida, Gautam Budh Nagar, U.P.-201301, [www.radheykrishnagroup.com](http://www.radheykrishnagroup.com)

**Site Office:** GH - 04A, Sector - 16, Gr. Noida (West), Gautam Budh Nagar, U.P.-201308

**Sales Enquiry:** 8130411111, 0120-4895000 (20 lines), [query@radheykrishnagroup.com](mailto:query@radheykrishnagroup.com)

**Regional Office:** 601-602, Eldeco Corporate Tower, Vibhuti Khand, Gomti Nagar, Lucknow, U.P.-226010