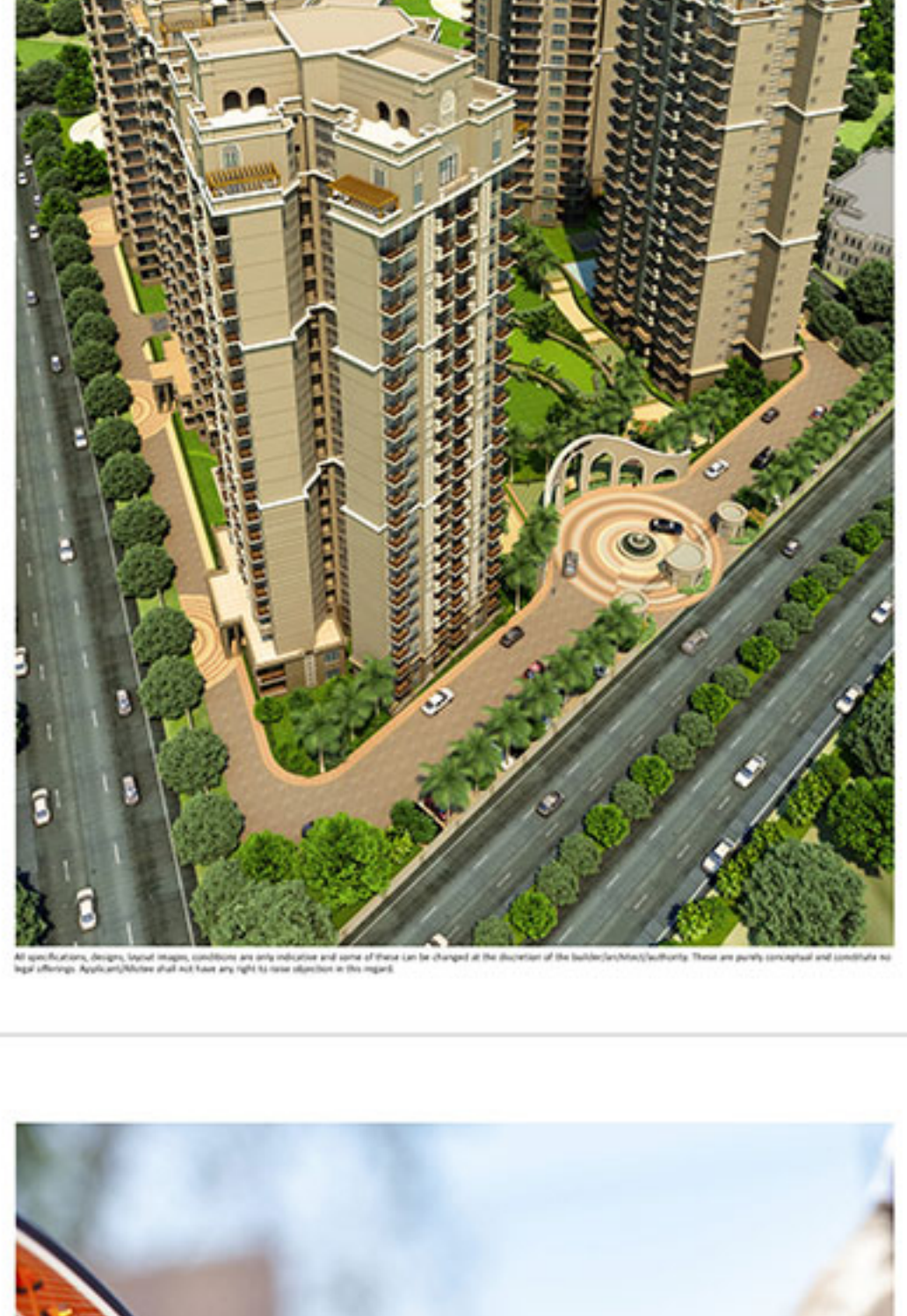




ACE GROUP  
Building ACE Aspirations  
Corp. Off. D-36, Chander Nagar, Gzb-201001 • T: 0120-4214340, 4314346 • E: info@acegroupnoida.com • www.acegroupnoida.com  
Call: 801 000 8999 • sms ACE to 54242



ACE golfshire  
SECTOR-15B, NOIDA



ACE golfshire  
SECTOR-15B, NOIDA

Nestled amidst the lush greenery of Noida Expressway in NCR, Ace Golfshire offers you a unique opportunity to enjoy world-class facilities for living. These 2 and 3 BHK size offering luxurious apartments with only 75 dwelling units per acre, will rise as the pinnacle of elegance and sophistication.

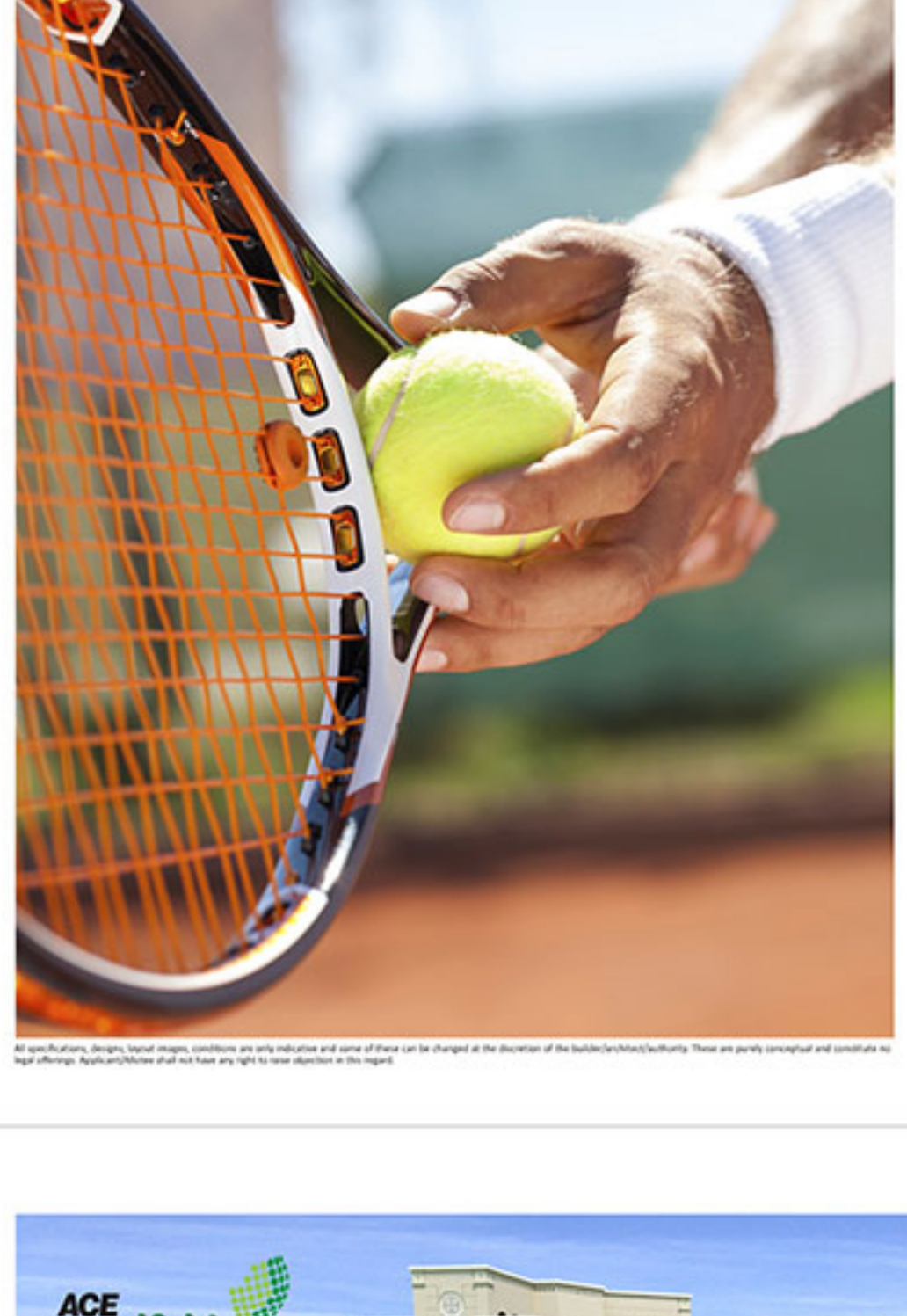
Ace Golfshire, located within 200 acre Sports City, offers facilities of all international standards sports. The apartments offering green view from all balconies, enjoy the exclusive theme development with integrated 18-hole Golf Course with the premium. An Elite club house and a swimming pool will cater only to 455 residential units. Crowning all the towers in this property will be plush golf theme penthouses.

a destination dedicated to an ultra modern lifestyle



sports facilities for recreation & relaxation

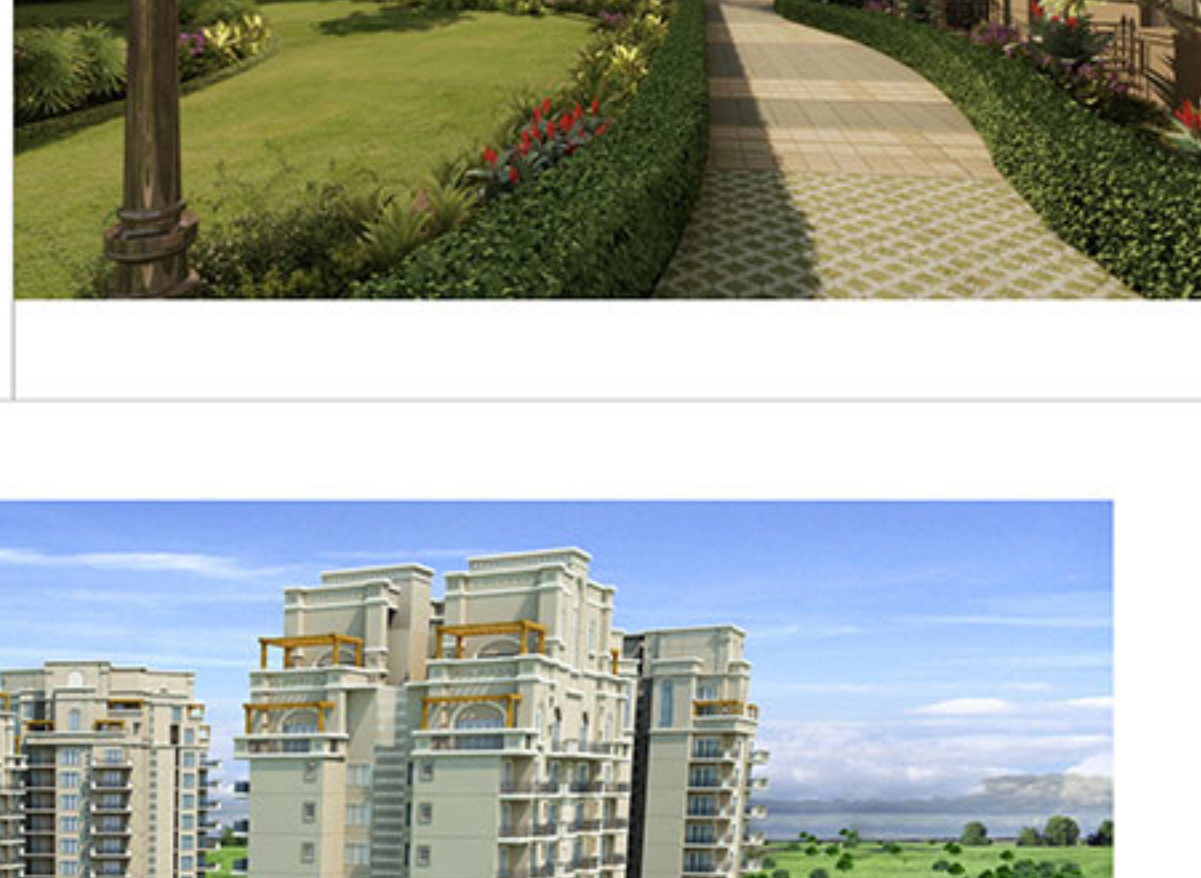
- SIGNATURE GOLF COURSE - 18 HOLE
- BASKETBALL COURT
- TENNIS COURT
- BADMINTON COURT
- JOGGING & CYCLING TRAILS
- SPECIAL TOTT LOTS
- SKATING RINK
- YOGA & MEDITATION AREA



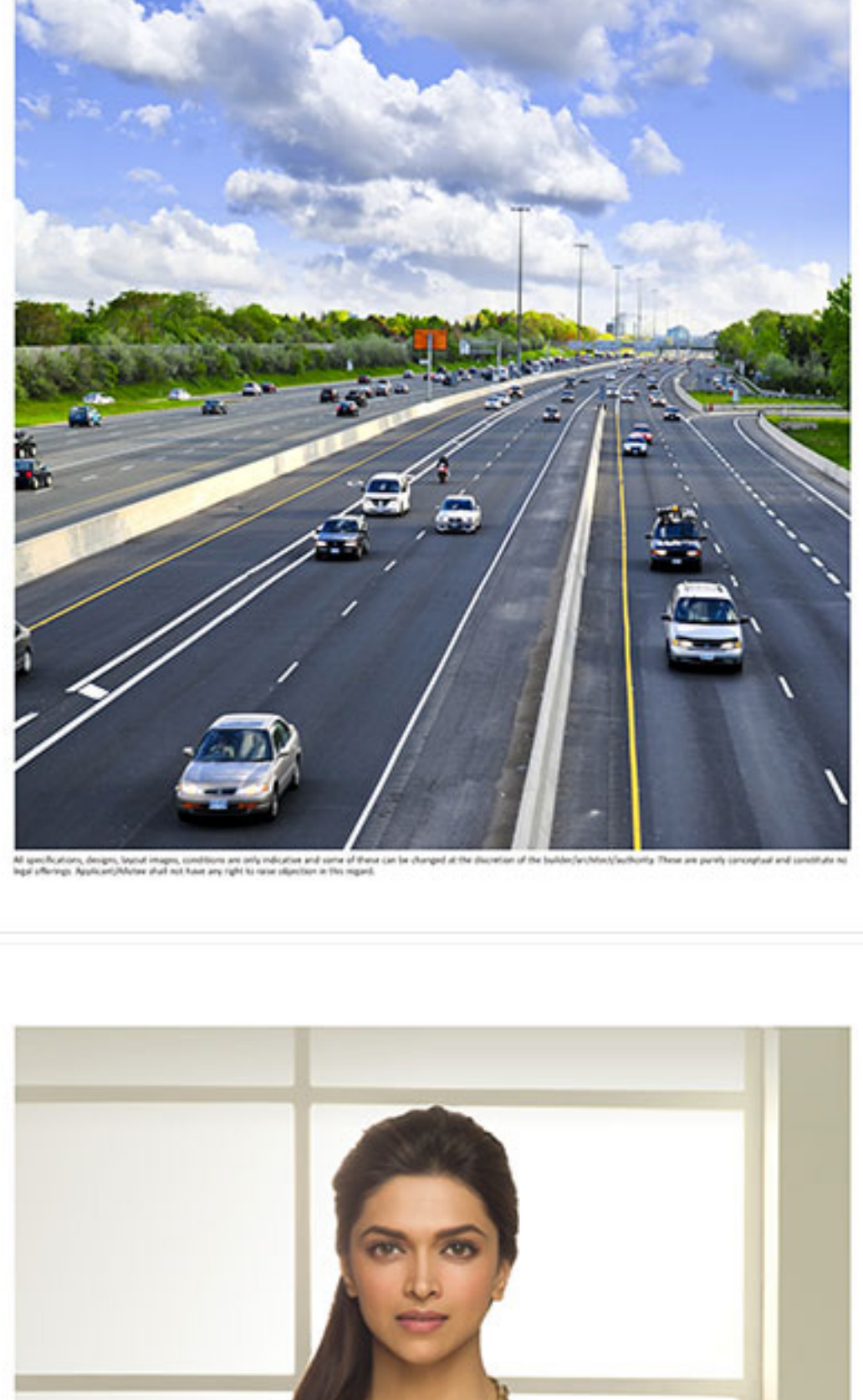
All specifications, designs, floor plans, conditions and any other details and color of floor can be changed at the discretion of the builder/developer/authority. These are purely conceptual and not intended for legal purposes. All specifications and floor plans are subject to change without any notice.



All specifications, designs, floor plans, conditions and any other details and color of floor can be changed at the discretion of the builder/developer/authority. These are purely conceptual and not intended for legal purposes. All specifications and floor plans are subject to change without any notice.



All specifications, designs, floor plans, conditions and any other details and color of floor can be changed at the discretion of the builder/developer/authority. These are purely conceptual and not intended for legal purposes. All specifications and floor plans are subject to change without any notice.



All specifications, designs, floor plans, conditions and any other details and color of floor can be changed at the discretion of the builder/developer/authority. These are purely conceptual and not intended for legal purposes. All specifications and floor plans are subject to change without any notice.



All specifications, designs, floor plans, conditions and any other details and color of floor can be changed at the discretion of the builder/developer/authority. These are purely conceptual and not intended for legal purposes. All specifications and floor plans are subject to change without any notice.

- LOCATED AT THE PRIME LOCATION OF SEC-15B
- FEW MINS. DRIVE AWAY FROM Noida-Greater Noida EXPRESSWAY
- HIGHLY ACCESSIBLE TO BOTH DELHI AND NOIDA
- PROPOSED OVERBRIDGE TO FARIDABAD
- AN ALL-INCLUSIVE ERID MART
- LOCATED ON 24 KM LONG Noida-Gz. NOIDA EXPRESSWAY
- QUICK ACCESS TO TAJ EXPRESSWAY THROUGH Noida EXPRESSWAY
- APPROVED METRO CONNECTIVITY AND PROPOSED INTERNATIONAL AIRPORT AT JZIRAH
- IN CLOSE PROXIMITY TO F3 TRACK

accessibility the defining factor

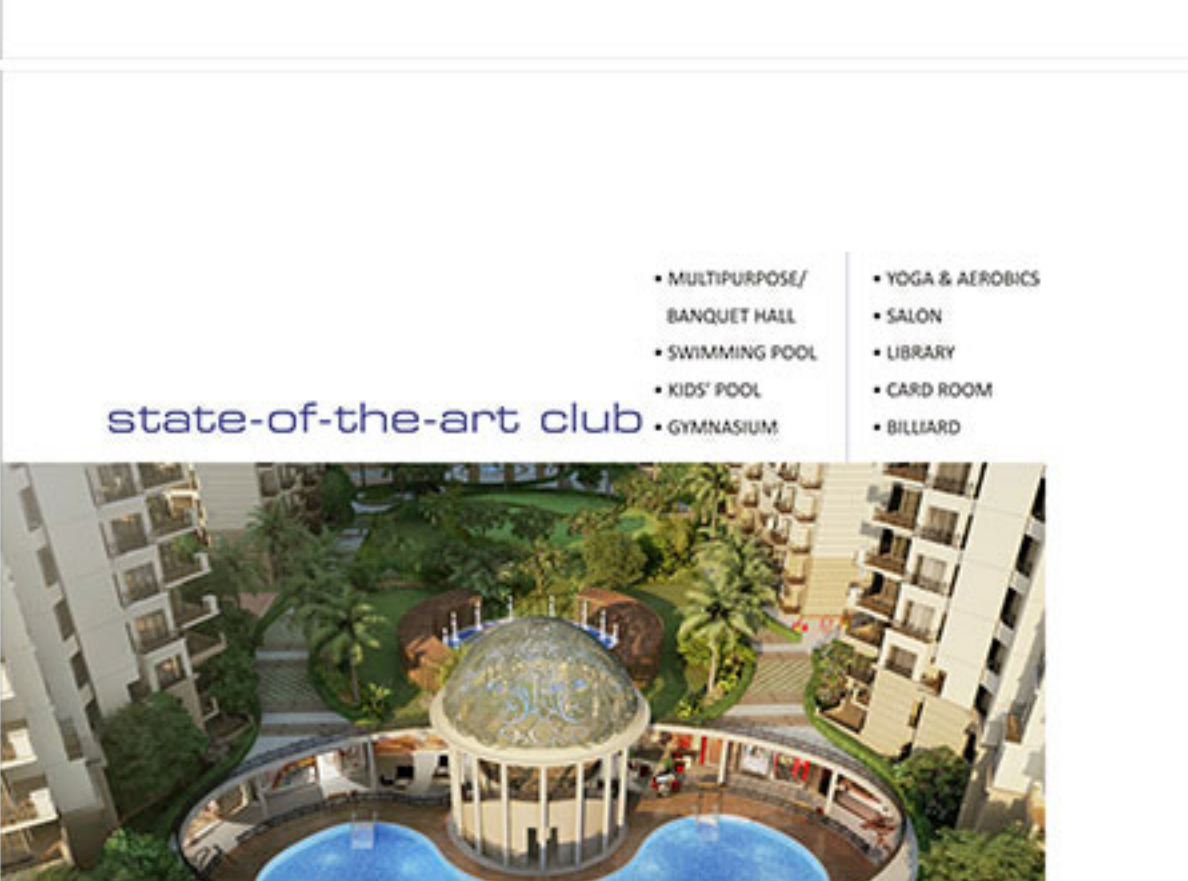


All specifications, designs, floor plans, conditions and any other details and color of floor can be changed at the discretion of the builder/developer/authority. These are purely conceptual and not intended for legal purposes. All specifications and floor plans are subject to change without any notice.

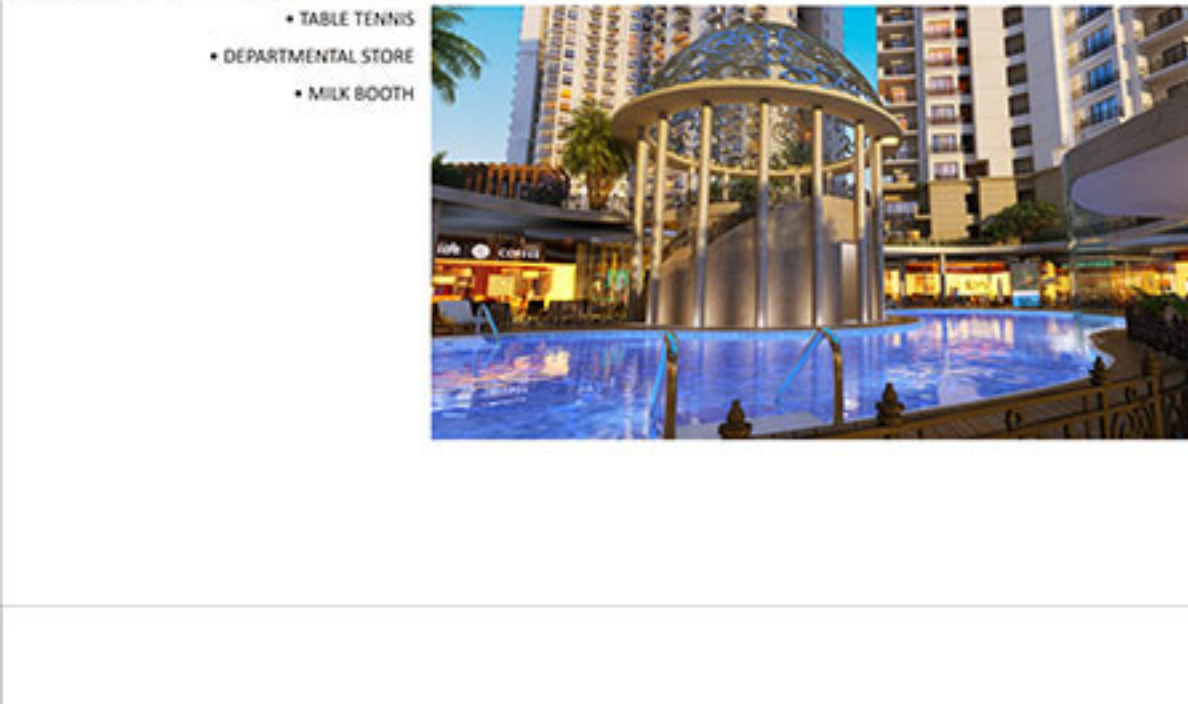


state-of-the-art club

- MULTIPURPOSE/ BANQUET HALL
- SWIMMING POOL
- KIDDY POOL
- GYMNASIUM
- YOGA & AEROBICS
- SALON
- LIBRARY
- CARD ROOM
- BILLIARD

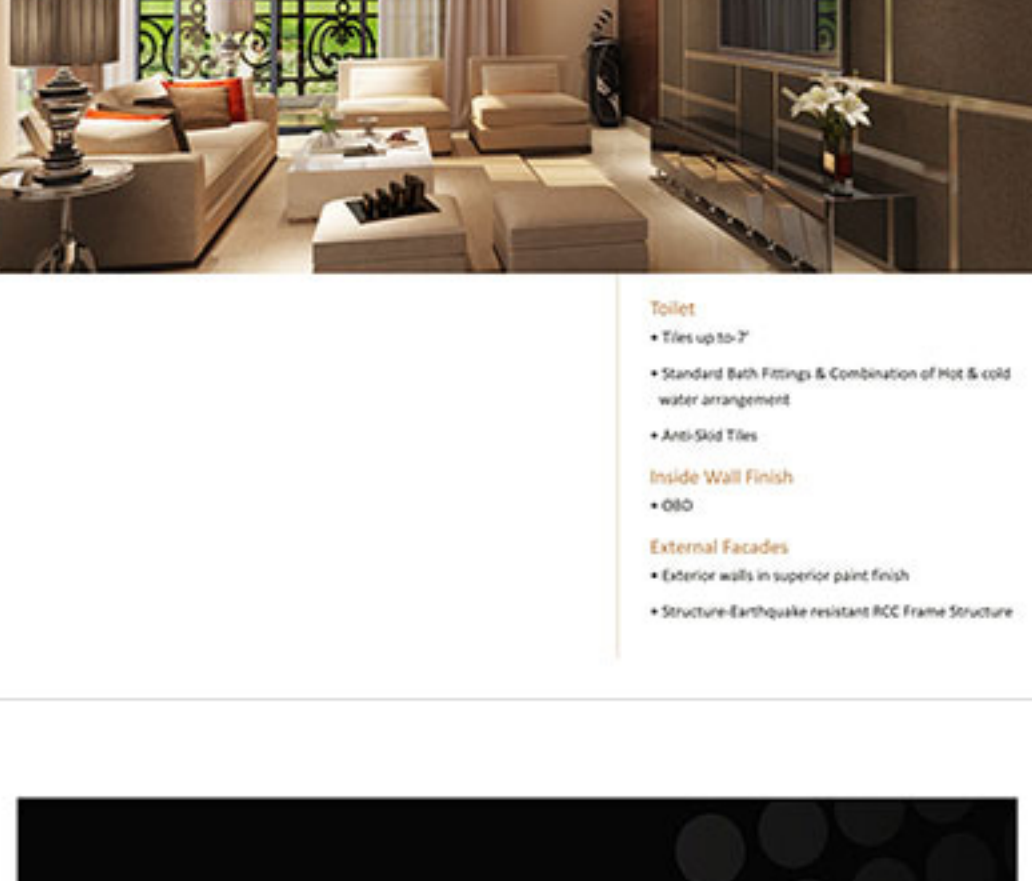


All specifications, designs, floor plans, conditions and any other details and color of floor can be changed at the discretion of the builder/developer/authority. These are purely conceptual and not intended for legal purposes. All specifications and floor plans are subject to change without any notice.

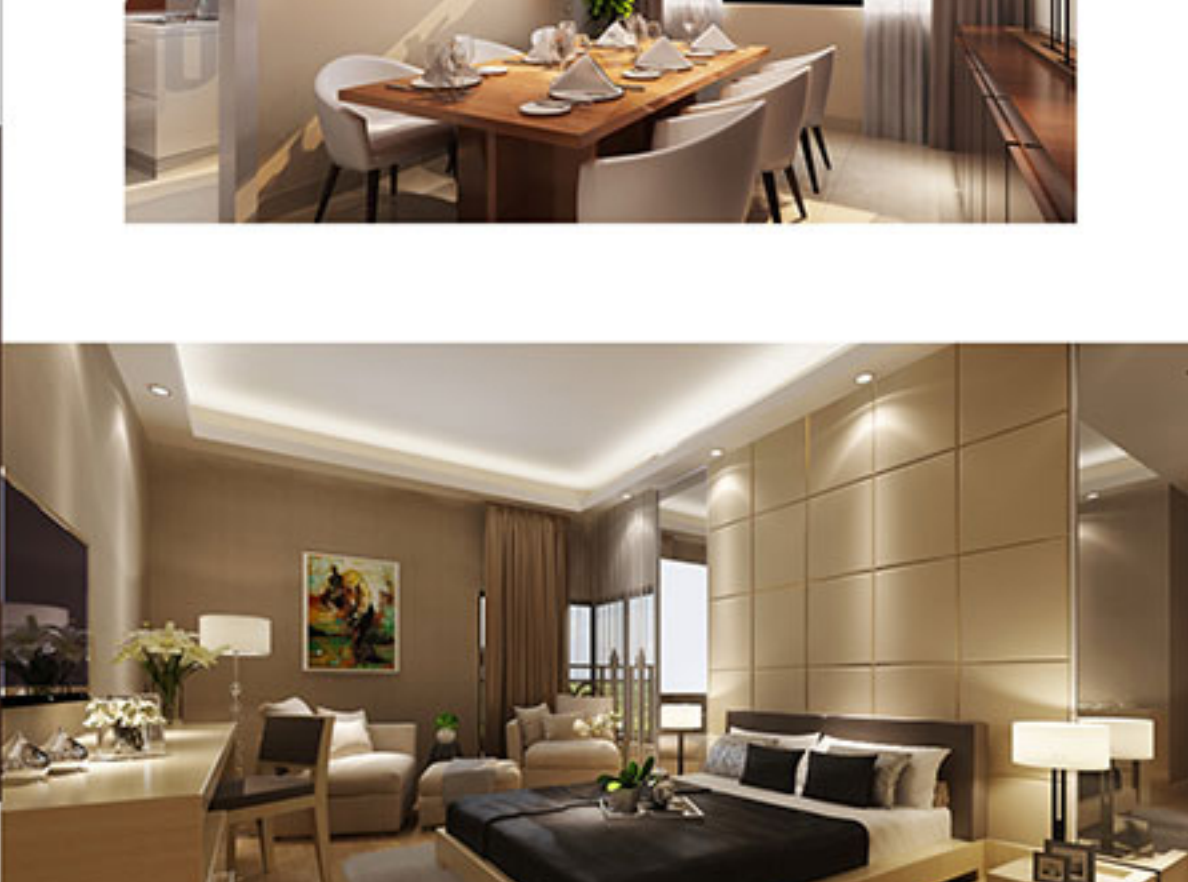


All specifications, designs, floor plans, conditions and any other details and color of floor can be changed at the discretion of the builder/developer/authority. These are purely conceptual and not intended for legal purposes. All specifications and floor plans are subject to change without any notice.

**fine dimensions of delight**



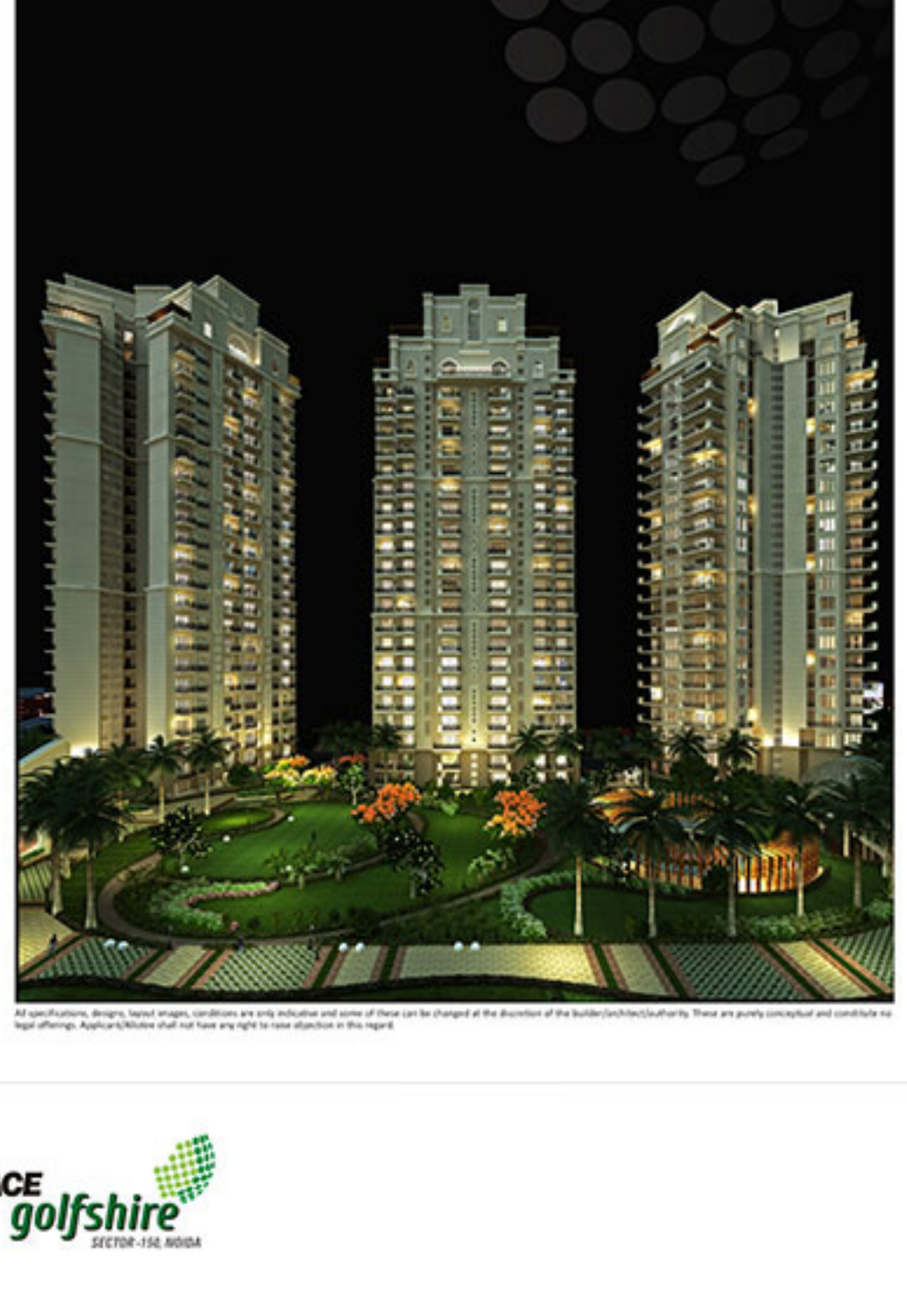
All specifications, designs, floor plans, conditions and any other details and color of floor can be changed at the discretion of the builder/developer/authority. These are purely conceptual and not intended for legal purposes. All specifications and floor plans are subject to change without any notice.



All specifications, designs, floor plans, conditions and any other details and color of floor can be changed at the discretion of the builder/developer/authority. These are purely conceptual and not intended for legal purposes. All specifications and floor plans are subject to change without any notice.



All specifications, designs, floor plans, conditions and any other details and color of floor can be changed at the discretion of the builder/developer/authority. These are purely conceptual and not intended for legal purposes. All specifications and floor plans are subject to change without any notice.



All specifications, designs, floor plans, conditions and any other details and color of floor can be changed at the discretion of the builder/developer/authority. These are purely conceptual and not intended for legal purposes. All specifications and floor plans are subject to change without any notice.



- Entry
- Park
- Swimming Pool
- Golf Course
- Tot Lot/Children's Play Area
- Amphitheater
- Tennis Court
- Bank Ball Court
- Badminton Court
- Yoga & Meditation
- Jogging & Cycling Trail



Typical Floor Unit Type-A  
3BHK + Servant - Unit Area: 2,095 Sq. Ft.  
• 3 Bedrooms • Living/Dining Room • Kitchen • Dress  
• Servant Room • 4 Toilets • 3 Balconies

All specifications, designs, floor plans, conditions and any other details and color of floor can be changed at the discretion of the builder/developer/authority. These are purely conceptual and not intended for legal purposes. All specifications and floor plans are subject to change without any notice.



Typical Floor Unit Type-B  
3BHK - Unit Area: 1,675 Sq. Ft.  
• 3 Bedrooms • Living/Dining Room • Kitchen • 2 Toilets  
• Utility • Dress • 4 Balconies

All specifications, designs, floor plans, conditions and any other details and color of floor can be changed at the discretion of the builder/developer/authority. These are purely conceptual and not intended for legal purposes. All specifications and floor plans are subject to change without any notice.



Typical Floor Unit Type-C  
2BHK - Unit Area: 1,195 Sq. Ft.  
• 2 Bedrooms • Living/Dining Room • Kitchen  
• 2 Toilets • 3 Balconies

All specifications, designs, floor plans, conditions and any other details and color of floor can be changed at the discretion of the builder/developer/authority. These are purely conceptual and not intended for legal purposes. All specifications and floor plans are subject to change without any notice.



All specifications, designs, floor plans, conditions and any other details and color of floor can be changed at the discretion of the builder/developer/authority. These are purely conceptual and not intended for legal purposes. All specifications and floor plans are subject to change without any notice.

fulfilling ACE Aspirations  
ACE Group, a renowned name in the field of real estate in Delhi NCR. Its fervor for professionalism and great honesty are the two watch words at Ace. Its fervor for innovation has propelled ACE to set new trends and benchmarks of architectural excellence in the real estate industry. Having been the name behind more than five thousand luxurious apartments, the emphasis of ACE on quality has paid the company rich returns, the most important of them being the trust of its customers. **fulfilling ACE Aspirations**

