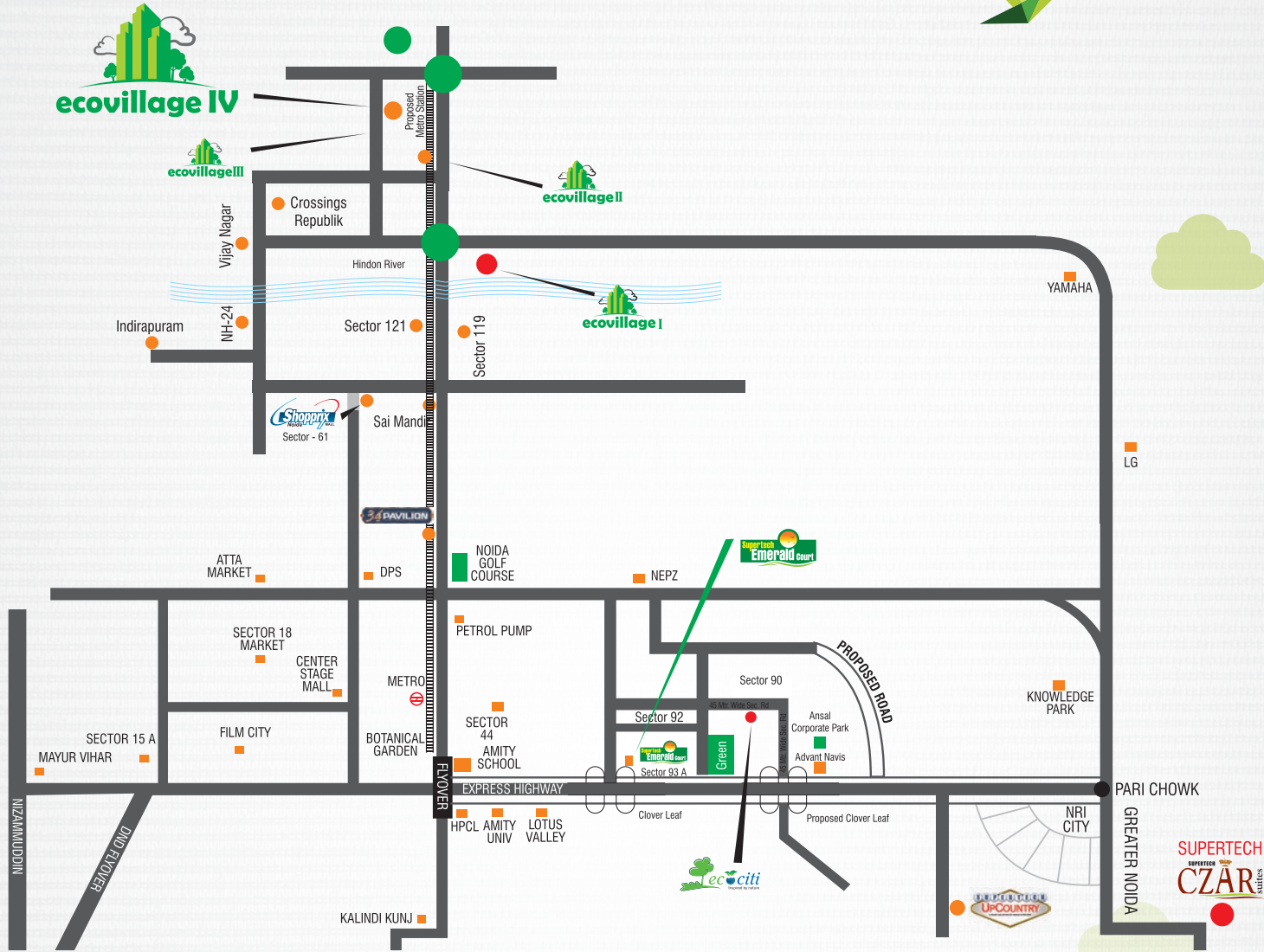


Location Map



Distance Legends

- Sector 71 Red Light - 6 kms (approx.)
- Noida City Centre Metro Station - 9 kms (approx.)
- Sai Mandir - 8.5 kms
- Indirapuram - 6.5 kms
- Crossings Republik - 4 kms



There is nothing more spectacular than being a part of a residential development of more than 20,000 smiling customers at Ecovillage 1, 2 & 3.

For the fourth time, an exclusive opportunity knocks at your door. Be part of the finest amenities available, elegant designs and an incredible location at the most affordable price.

Features: 2/3 BHK homes • 4 side open plot with 82% landscaped area • 24x7 CNG operated power back-up • In-house Shopping Arcade • Club house with Banquet Hall and Indoor games • Health Club and Spa • 60 meter wide road connectivity

Unit Plan

2 BHK + 2 TOILET
Super Area - 890.00 sq. ft.



2 BHK + 2 TOILET
Super Area - 1100 sq. ft.



3 BHK + 2 TOILET
Super Area - 1175 sq. ft.



Unit Plan

3 BHK + 2 TOILET + DRESS
Super Area - 1464 sq. ft.



Entry →

3 BHK + 3 TOILET + DINNING
Super Area - 1660 sq. ft.



← Entry

3 BHK + 3 TOILET + DINING + DRESS
Super Area - 1660 sq. ft.



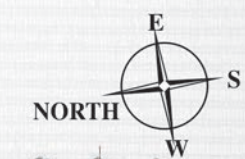
↑ Entry

Site Plan



- TYPE OF FLATS**
- 890 SQ. FT. (2BHK + 2TOI)
 - 1100 SQ.FT. (2BHK + 2TOI)
 - 1175 SQ. FT. (3BHK + 2TOI)
 - 1464 SI. FT. (3BHK + 2TOI + DRESS)
 - 1660 SQ. FT. TYPE A (3BHK + 3TOI + DINNING)
 - 1660 SQ. FT. TYPE B (3BHK + 3TOI + DINNING + DRESS)

- LEGEND**
- 1 GUARD ROOM AND ENTRANCE
 - 2 METAL SCULPTURE
 - 3 FRAGRANCE GARDEN
 - 4 GAZEBO WITH SITTING
 - 5 PLUMERIA GARDEN
 - 6 COMMUNITY CENTER
 - 7 PARTERRE GARDEN
 - 8 AMPHITHEATER
 - 9 KIDS PLAY AREA
 - 10 SCREEN MOUNDS AND JAPANESE GARDEN
 - 11 JOGGING TRACK
 - 12 BADMINTON COURT
 - 13 YOGA AND MEDITATION GARDEN
 - 14 PALM COURT
 - 15 SKATING RINK



Specifications



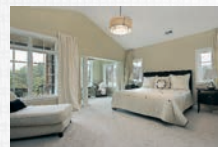
Living Room

Floor - Vetrified Tiles
External Door and Window - Powder Coated Aluminum with Double Rebate
Electrical Fittings - Sheet and Switches
Walls - Oil Bound Distemper
Internal Door - Flush Shutter with Wooden Frame
Hardware - Copper wiring and PVC Concealed conduit, Provision for adequate light and power points as well as television and TV outlets with modular switches and protective M.C.B's.
Electrical - All Doors and windows with metal fittings along with mortice lock on the main door
Ceilings - Oil Bound Distemper



Dining

Floor - Vetrified Tiles
External Door and Window - Powder Coated Aluminum with Double Rebate
Electrical Fittings - Sheet and Switches
Walls - Oil Bound Distemper
Internal Door - Flush Shutter with Wooden Frame
Hardware - All Doors and windows with metal fittings along with mortice lock on the main door
Electrical - Copper wiring and PVC Concealed conduit, Provision for adequate light and power points as well as television and TV outlets with modular switches and protective M.C.B's.
Ceilings - Oil Bound Distemper



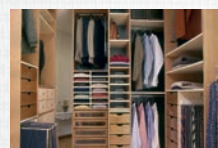
Bedroom

Floor - Vetrified Tiles
External Door and Window - Powder Coated Aluminum with Double Rebate
Electrical Fittings - Sheet and Switches
Walls - Oil Bound Distemper
Internal Door - Flush Shutter with Wooden Frame
Hardware - All Doors and windows with metal fittings along with mortice lock on the main door
Electrical - Copper wiring and PVC Concealed conduit, Provision for adequate light and power points as well as television and TV outlets with modular switches and protective M.C.B's.
Ceilings - Oil Bound Distemper



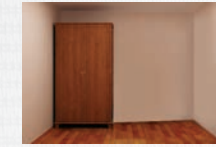
Master Bedroom

Floor - Wooden Flooring wardrobe/cupboard in all bedrooms
External Door and Window - Powder Coated Aluminum with Double Rebate
Electrical Fittings - Sheet and Switches
Walls - Oil Bound Distemper
Internal Door - Flush Shutter with Wooden Frame
Hardware - All Doors and windows with metal fittings along with mortice lock on the main door
Electrical - Copper wiring and PVC Concealed conduit, Provision for adequate light and power points as well as television and TV outlets with modular switches and protective M.C.B's.
Ceilings - Oil Bound Distemper



Dressing Room

Floor - Wooden Flooring wardrobe/cupboard in all bedrooms
External Door and Window - Powder Coated Aluminum with Double Rebate
Electrical Fittings - Sheet and Switches
Walls - Oil Bound Distemper
Internal Door - Flush Shutter with Wooden Frame
Hardware - All Doors and windows with metal fittings along with mortice lock on the main door
Electrical - Copper wiring and PVC Concealed conduit, Provision for adequate light and power points with modular switches and protective M.C.B's.
Ceilings - Oil Bound Distemper



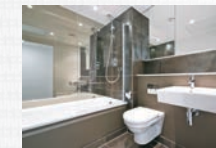
Servant Room

Floor - Ceramic Tiles
External Door and Window - Powder Coated Aluminum with Double Rebate
Electrical Fittings - Sheet and Switches
Walls - Oil Bound Distemper
Internal Door - Flush Shutter with Wooden Frame
Hardware - All Doors and windows with metal fittings along with mortice lock on the main door
Electrical - Copper wiring and PVC Concealed conduit, Provision for adequate light and power points as well as television and TV outlets with modular switches and protective M.C.B's.
Ceilings - Oil Bound Distemper



Kitchen

Floor - Vetrified Tiles
External Door and Window - Powder Coated Aluminum with Double Rebate
Electrical Fittings - Sheet and Switches
Walls - Ceramic tiles of 2' height from the platform
Fittings - Stainless steel sink with C.P. Fittings full Modular Kitchen with RO system
Internal Door - Open
Hardware - All Doors and windows with metal fittings
Electrical - Copper wiring and PVC Concealed conduit, Provision for adequate light and power points with modular switches and protective M.C.B's.
Water Supply - Underground and Overhead water tanks with pumps and 24 hours water supply. Individual R.O plant Standard make in each kitchen.
Ceilings - Oil Bound Distemper



Toilet

Floor - Ceramic Tiles
Electrical Fittings - Sheet and Switches
Walls - Ceramic tiles of 7' height
Fittings - Washbasin WC & C.P. Fittings
Internal Door - Flush Shutter
Hardware - All Doors and windows with metal fittings
Electrical - Copper wiring and PVC Concealed conduit, Provision for adequate light and power points with modular switches and protective M.C.B's.
Water Supply - Underground and Overhead water tanks with pumps and 24 hours water supply.
Ceilings - Flase Ceiling



Balconies

Floor - Ceramic Tiles
Electrical Fittings - Sheet and Switches
Walls - Oil Bound Distemper
Electrical - Copper wiring and PVC Concealed conduit, Provision for adequate light and power points
Water Supply - Underground and Overhead water tanks with pumps and 24 hours water supply.
Ceilings - Permanent paint finish



Lift

Floor - P.V.C. Flooring
Electrical Fittings - Sheet and Switches



Lobbies/Corridor

Floor - Kota Stone/Vetrified Tiles
Walls - Oil Bound Distemper
Electrical - Copper wiring and PVC Concealed conduit



Exterior Finish

Walls - Texture Paint
Internal Door - Flush Shutter with Wooden Frame

Disclaimer: Unit Layout, Master Layout & Specifications listed above are tentative and can be changed at the sole discretion of Builder/Developer.

NOTE: Tv/ Telephone Points will be provided in all Rooms & Toilet.

Disclaimer: Unit Layout, Master Layout & Specifications listed above are tentative and can be changed at the sole discretion of Builder/Developer.